

SXC-RL30V2.0

Intel® Alder Lake-U/Raptor Lake-U Processor based Embedded Mini PC
with 2LAN, 2COM, 7USB, 4HDMI2.0



Features

- CPU: Intel® Alder Lake-U/Raptor Lake-U Processor
- Memory: Onboard LPDDR5, 8GB/16GB/32GB
- GPU: Integrated Intel® UHD/Iris® Xe Graphics
- Ethernet: 2 x Intel i226(10/100/1000/2500Mbps)
- Storage&Expansion: 2 x M.2 Key M for NVMe SSD, M.2 Key B for SATA SSD, M.2 Key B for SATA SSD/4G/5G, M.2 Key M for 2230 UFS Flash, M.2 Key E for Wi-Fi and Bluetooth(CNVi), SIM Slot
- I/O Ports: 2 x LAN, 2 x COM, 2 x USB3.2, 4 x USB2.0, 4 xHDMI2.0, USB-C
- Power: 12V/19V DC-IN/9-36V Phoenix optional
Support HDMI Hot-Plug Lock, RTC/W



Introduction

The MAXTANG SXC-RL30 is a compact, fanless embedded mini PC powered by the Intel Alder Lake-U/Raptor Lake-U Series processor with integrated Intel UHD/Iris Xe Graphics, delivering robust computing performance and advanced multi-display capability. Supporting up to four display outputs via HDMI 2.0, it enables rich, synchronized visuals ideal for digital signage, control rooms, and industrial applications. Flexible connectivity—including dual 2.5 Gigabit LAN, two COM ports (RS232/RS485 optional), seven USB ports, and M.2 expansion—ensures seamless integration with diverse systems and peripherals.

Engineered for reliability in demanding environments, the SXC-RL30 features passive cooling, wide-range power input (12V/19V DC-IN or 9V-36V via Phoenix connector), and stable operation across an extended -20°C to 60°C temperature range. Security and manageability are enhanced with optional TPM, Real-Time Clock with daily scheduling, and support for both Windows and Linux. Combining performance, durability, and adaptability, the SXC-RL30 is a future-ready solution for industrial automation, AI edge computing, and immersive multi-display deployments.



H/W Monitor



Watchdog



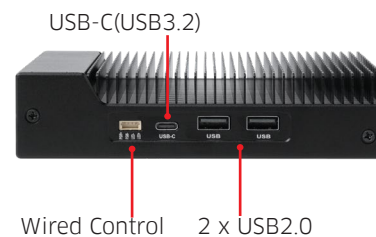
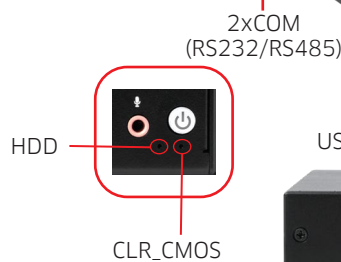
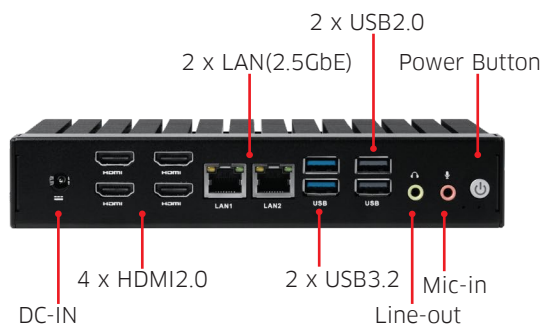
I/O Interfaces



• PASSIVE



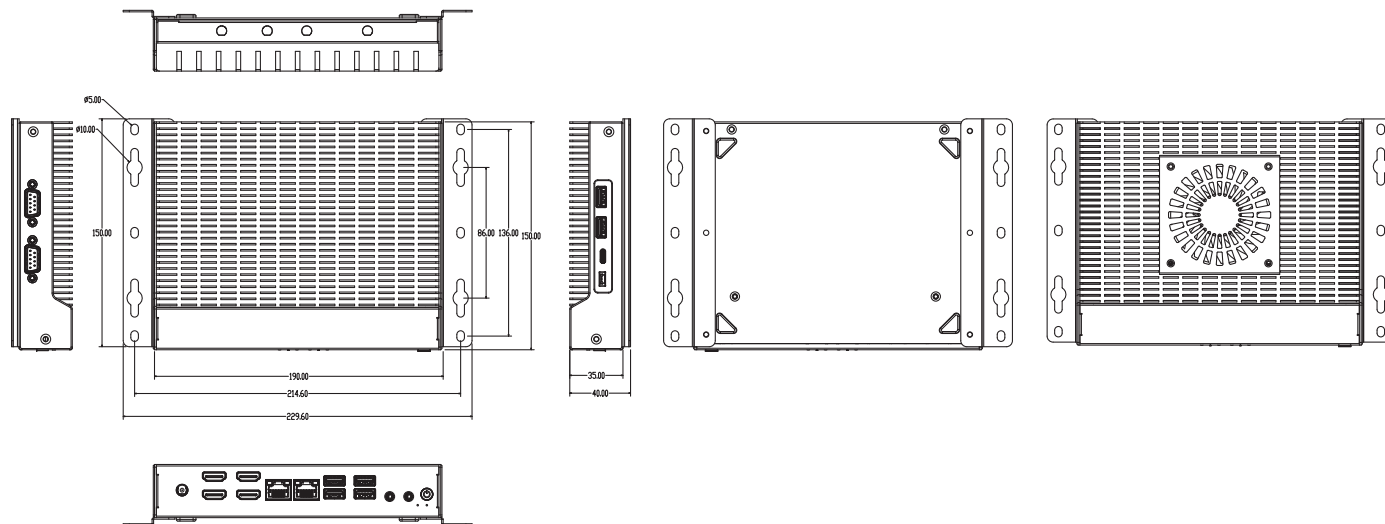
• ACTIVE



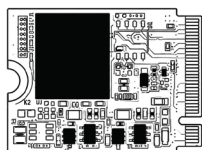
Technical Specifications

Processor	Alder Lake-U Series	i3-1215U	i5-1235U	i7-1255U	
	Total Cores/Threads	6C/8T	10C/12T	10C/12T	
	P-core Max Turbo Frequency	4.40GHz	4.40GHz	4.70GHz	
	E-core Max Turbo Frequency	3.30GHz	3.30GHz	3.50GHz	
	Intel® Smart Cache	10MB	12MB	12MB	
	Raptor Lake-U Series	i3-1315U	i5-1335U	i7-1355U	
	Total Cores/Threads	6C/8T	10C/12T	10C/12T	
	P-core Max Turbo Frequency	4.50GHz	4.60GHz	5GHz	
	E-core Max Turbo Frequency	3.30GHz	3.40GHz	3.70GHz	
	Intel® Smart Cache	10MB	12MB	12MB	
	BIOS	AMI UEFI BIOS			
	Memory	Type	Onboard LPDDR5		
		Capacity	8GB/16GB/32GB		
	Display	GPU	Integrated Intel® UHD/Iris® Xe Graphics		
Interface		4 x HDMI2.0, supports Hot Plug Detect (HPD) lock			
Ethernet	Controller	2 x Intel i226			
	Max. Speed	10/100/1000/2500Mbps			
Audio	Interface	2 x RJ45			
	Audio Codec	SenaryTech SN6186			
Storage&Expansion	Interface	1 x Line-out, 1 x Mic-in			
	M.2_N1/N2	2 x M.2 Key M Slot for 2280 NVMe SSD			
	M.2_S	1 x M.2 Key B Slot for 2280 SATA SSD			
	M.2_SW5G	1 x M.2 Key B Slot for 2280 SATA SSD/3042 4G/3052 5G			
	M.2_E	1 x M.2 Key E Slot for 2230 Wi-Fi and Bluetooth(CNVi)			
	M.2_UFS	Optional. 1 x M.2 Key M Slot for 2230 UFS Flash Card.			
	UFS Flash	Optional. Customized UFS Flash Card available in 128GB/256GB/512GB			
Other I/O	SIM	1 x Nano SIM Slot			
	COM	2 x COM(RS232 by default, RS485 optional through hardware changes)			
	USB2.0	4 x USB2.0			
	USB3.2	2 x USB3.2			
	USB-C	1 x USB-C(USB3.2 only)			
	Wired Control	1 x Wired Remote Control			
	GPIO	Optional			
	TPM	Onboard, optional			
	Real Time Clock	RTC	Support RTC set up, independently for each day of the week.		
	Dimension	Size	190mm x 150mm x 35mm		
Weight	N.W.	1.06KG			
Power	Standard Port	12V/19V DC-IN			
	Optional	9V-36V Phoenix Connector			
Temperature	Operating Temp.	- 20°C to 60°C			
	Storage Temp.	- 40°C to 80°C			
Cooling Method	Passive/Active				
Operating System	Windows 10/11 64bit, Linux 64bit				

Dimension (mm)



Optional Accessories



*Customized UFS Flash Card available in 128GB/256GB/512GB

Copyright © 2026 Maxtang Technology Co. Ltd. All rights reserved. All data is for information purposes only and not guaranteed for legal purposes. Information has been carefully checked and is believed to be accurate however, no responsibility is assumed for inaccuracies. Maxtang and the Maxtang logo and all other trademarks or registered trademarks are the property of their respective owners and are recognized. The terms HDMI, HDMI High-Definition Multimedia Interface, HDMI Trade dress, and HDMI Logos are trademarks or registered trademarks of HDMI Licensing Administrator, Inc.