

DT-8853H-B1

Intel® 12th/13th Gen Desktop Series Processor (LGA1700 Socket) with Z690 Chipset based Industrial Box PC



Features

- CPU: 12th/13th Gen Intel® Desktop CPU + Z690 Chipset
- Memory: Dual channel SO-DIMM DDR5 up to 64 GB
- Display via: 1x HDMI2.0+ 1x VGA + 1x DP
- I/O Interface: 8x USB3.2, 2 x USB2.0, 6x COM
- Ethernet: 1*Intel® i219(1.0GbE)+2*Intel® i226(2.5GbE)
- Storage: 2xSATA3.0 + 2xM.2 for SSD
- Expansion: M.2 for WiFi, M.2 for 4G/5G
- Power: 16-36V DC-in



IoT Solutions
Alliance

Industrial Solution
Builders Specialist

Maxtang®

MAXIMIZING YOUR COMPUTING PRODUCTIVITY

Introduction

The Maxtang DT8853 Serie industrial PC is powered by the Intel Alder Lake-S and Raptor Lake-S CPUs with the Z690 chipset. The DT-8853H-B1 industrial PC is purpose-built for various industrial applications and excels with dual-channel SO-DIMM DDR5 RAM (up to 64GB), triple displays (HDMI, DP, VGA) for enhanced productivity. It features 2x SATA3.0 interface plus 3x M.2 slots, 3x LAN(1*1.0Gbps+2*2.5Gbps), 6x COM, 8x USB 3.2, 2x USB 2.0, and 2x8-bit GPIO for a wide range of peripherals and external devices; which provides more flexibility and expandability.

Its robust build conquers harsh environments, handling contaminants and noise while optimizing Mean Time Between Failures (MTBF), ensuring an extended platform lifecycle. Whether you need a reliable computing solution for industrial automation, machine vision, edge computing, or other demanding applications, this system, with its powerful processors, extensive connectivity options, and robust construction, is designed to exceed your expectations. Experience the future of computing with this high-performance, feature-rich system.



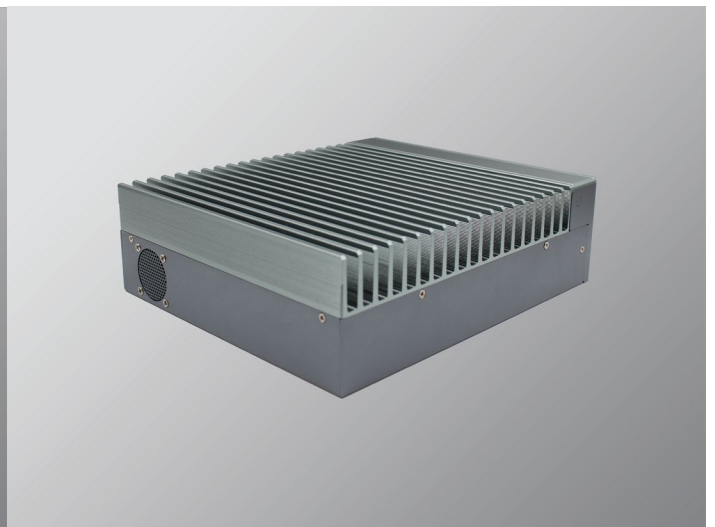
H/W Monitor



Watchdog



Product Views

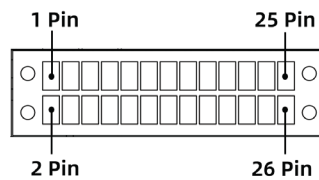
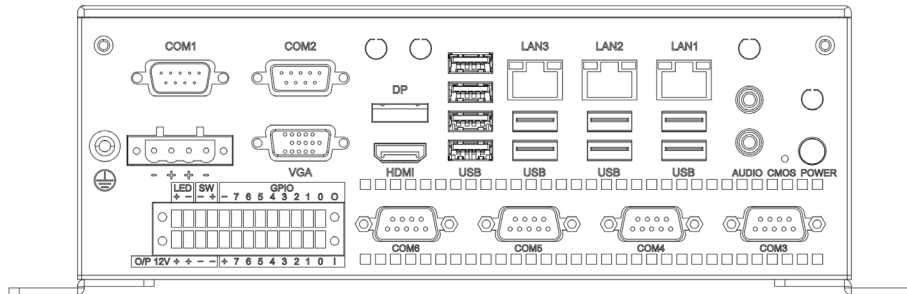
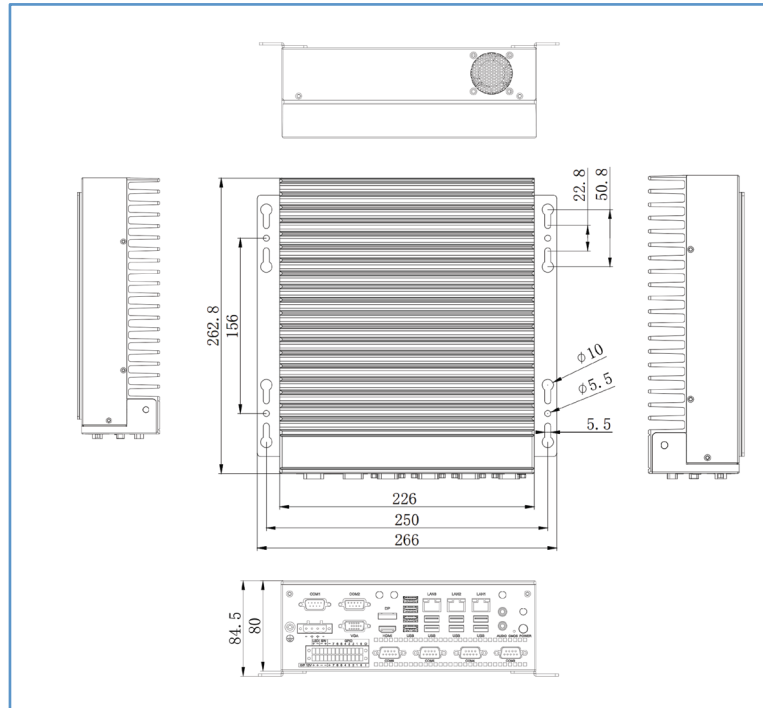


Technical Specifications

Processor	CPU	Intel® 12th/13th Gen Desktop Series Processor ≤65W
	Code Name	Alder Lake/Raptor Lake
	Socket	FCLGA1700
	Chipset	Z690
	BIOS	AMI UEFI BIOS
Memory	Type	Dual Channel SO-DIMM DDR5-4800MHz
	Max. Capacity	64GB
Display	GPU	Integrated Intel® UHD Graphics for 12th/13th Gen Intel Processor
	Graphics APIs	DirectX 12/12.1 ^(L SKU) , OpenGL 4.5/4.6 ^(L SKU) , OpenCL 3/2.1 ^(E SKU)
	Interface	1x HDMI+1x VGA+ 1x DP
Ethernet	Controller	1x Intel® i219, Data Rate Per Port:1.0 GbE (LAN1)
		2x Intel® i226, Data Rate Per Port:2.5 GbE (LAN2, LAN3)
	Interface	3x RJ45
Storage	SATA	2x SATA3.0 interfaces for 2.5" or 3.5" SSD/HDD
	M.2_M	1x M.2_2280 Slot for SATA/NVMe(PCIe4X Signal) SSD
	M.2_B	1x M.2_2242/2252 Slot for SATA SSD or 4G/5G Module
Expansion	M.2_E	1x M.2_2230 Slot for Wi-Fi and Bluetooth
I/O	USB3.0	8x USB3.0
	USB2.0	2x USB2.0
	COM	6xCOM (4x RS_232/485, 2x RS_232/485/422)
	Audio	1x Mic-in
		1x Line-out
	GPIO	2x 8-bit
Other	Power Switch	Power ON/OFF, Wired Switch
Dimension	Size(W x H x D)	266 x 84.5 x 262.8 (in mm)
Power	Input	1x 4Pin DC 16-36V Single Input for MB Power
	Input	1x 4Pin DC 12V Single Input for PCIe slot Power
	Output	1x 4Pin 12V Single Output
	Adapter	Not included by default.
		Please contact sales for information on compatible power adapters.
Temperature	Operating Temp.	0 ~ 60 °C (32 ~ 140 °F)
	Storage Temp.	-40 ~ 80 °C (-40 ~ 176 °F)
	Operating Humidity	95% @ 40 °C (Non-condensing)
Operating System		Windows 10/11, Linux (Linux kernel 5.18 or later version)

* All specifications and photos are subject to change without notice.

Dimension(mm)



definition	Pin		definition
PW_LED +	1	2	OUT_12V +
PW_LED -	3	4	OUT_12V +
ON/OFF -	5	6	OUT_12V -
ON/OFF +	7	8	OUT_12V -
GND	9	10	VCC
GP87	11	12	GP77
GP86	13	14	GP76
GP85	15	16	GP75
GP84	17	18	GP74
GP83	19	20	GP73
GP82	21	22	GP72
GP81	23	24	GP71
GP80	25	26	GP70